

Automatics

AirBox III – System Security

Geovent Airbox III is an air sensor (pressure switch / system monitor) which is suitable for monitoring process exhaust ventilation under workers health requirements.

Airbox III is easy to install and simple to use, which saves costs. Operation information in the 2x32 line display shows information about the operation status.

Features:

Airbox III is equipped with a built-in pressure sensor (5-5000 Pa) and 2 alarm outputs and 1 motor output. The multiple connections options means that the device can be used for many purposes such as start / stop of fan (e.g. via frequency inverter), or filter guard. It is possible to connect external alarm light / siren.

All functions of the Airbox III are controlled by a powerful microprocessor with built-EE-prom, which is used for storing software programs and your process parameters. Assembling the microprocessor and EE-prom into a single component reduces the risk of data loss.

All vital components are well protected against external electrical interference / noise with both filters and fuses.

The device is CE marked and EMC tested.

- 1 pcs. AirBox III includes:
- 1 pcs. AirBox III incl. PG connectors.
- 1 pcs. Measuring tubes Ø6/4 mm in length 2 meters.
- 2 pcs. Rubber grommets to attach the measuring tubes in the channel.
- 7 pcs. Terminals for connecting cables.
- 1 pcs. Manual for AirBox III.

AirBox III is well suited for following:

- Pressure switch with alarm by Danish Working Environment Authority rules
- Monitoring of pressure in the extraction installations
- Monitor the pressure drop across filters or ventilation components
- Measuring pressure throughout the 5 - 5.000 Pa range
- Monitoring and start / stop of e.g. fan
- Akustisk alarm

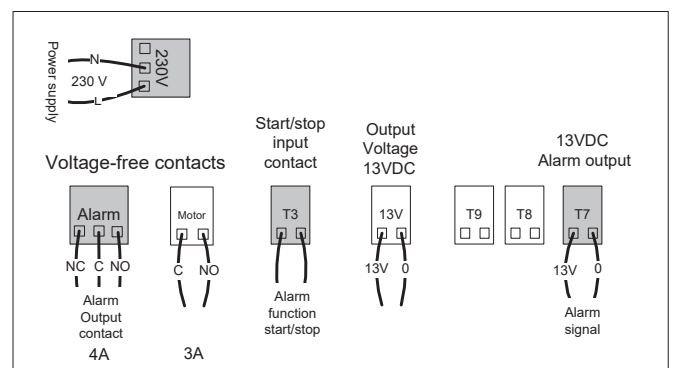


AirBox III

Ordering table

Art. No.	Description
13-710	AirBox III 10-5000 Pa ventilation monitor with built-in pressure transmitter, monitoring and alarm for process extraction. Complies with the requirements of the Danish Working Environment Authority.

Installation diagram software version V510



Diagram

Terminal	Funktion	Aktivering/Tilslutning	Data
Fuse	Protects against power failure	Skiftes ved overspænding	Replaced by overvoltage
Pressure sensor	Pressure / Vacuum measurement		Min. 5 Pa Max. 5000 Pa
Pressure sensor	Pressure / Vacuum measurement		± 10 Pa in area 20-1000 Pa ± 50 Pa in area 1000-5000 Pa
Pressure sensor	Temperature operation		± 1% 0-40 °C
Pressure sensor	Zeropoint calibration		None
Supply	Power supply		230 V AC
Trafo	Transforms 230 V AC to 13 V DC	Tilslutning fra terminal 13 V DC/OUT og T-7	13 V DC ± 5 %
Motor relay	Start/ Stop relay	Motor relæ følger T-3	Max. load 24 V DC/AC
Alarm relay	Start/ Stop relay	Følger alarm funktion	Belastning 24 V DC/AC/ 230 V AC
Terminal T-3	Start/Stop for alarmfunktion		Tilsluttes til ventilators start/stop kontakt eller luses permanent
Terminal T-7	Supply to alarmlamp or siren	Hvis målte tryk går udover min. og max. alarmgrænser	1 V DC max. 2 W Alarmdelay 10 sek.
ESC button	Alarmfunktion test	Ved tryk på ESC knap i mere end 10 sek.	
Boxen	Protection	Gummi tyller anvendes	Tæthedsklasse IP54
Boxen	Dimension (h*b*d)		120*170*60 mm