

Filtres

Geofilter GFB2 Tower

GeoFilter GFB2 Tower is a all in one, self-cleaning cartridge filter solution, with a built-in fan on top. The GFB2 Tower is based on our popular GFB2 filterunit unit and highly efficient MEF fans with B-type impellers. The unit is supplied with a TIMER controller as standard. A differential pressure control, a frequency inverter, and insulation can be supplied on request.

The unit is made of robust galvanized sheet metal, with easy access to filter change through the front hatch, and emptying of the bin is swiftly done by releasing the handle on the bin.

It is a complete solution, ready to be connected to power and compressed air.

A compressed air tank is built into the clean side of the filter. A wide selection of filter material is available, and filter material should always be selected carefully to match the specific process.

Airflow capacity of up to 7200 m³/h.

We recommend that the filter is placed indoor. Out-doors placing can give problems with condensation or the electronics.

If the filter is placed outside, anyway, we suggest that the filter is placed under a protective roof to shield the filter from rain. Adding a thermal insulation will reduce the risk.

Ordering table

Art. No.	Description
15-471	GeoFilter GFB2 Tower 6-2, incl. MEF 400-3
15-472	GeoFilter GFB2 Tower 9-3, incl. MEF 450-3
15-473	GeoFilter GFB2 Tower 12-4, incl. MEF 500-3



Top mounted fan in a built-in cabinet.



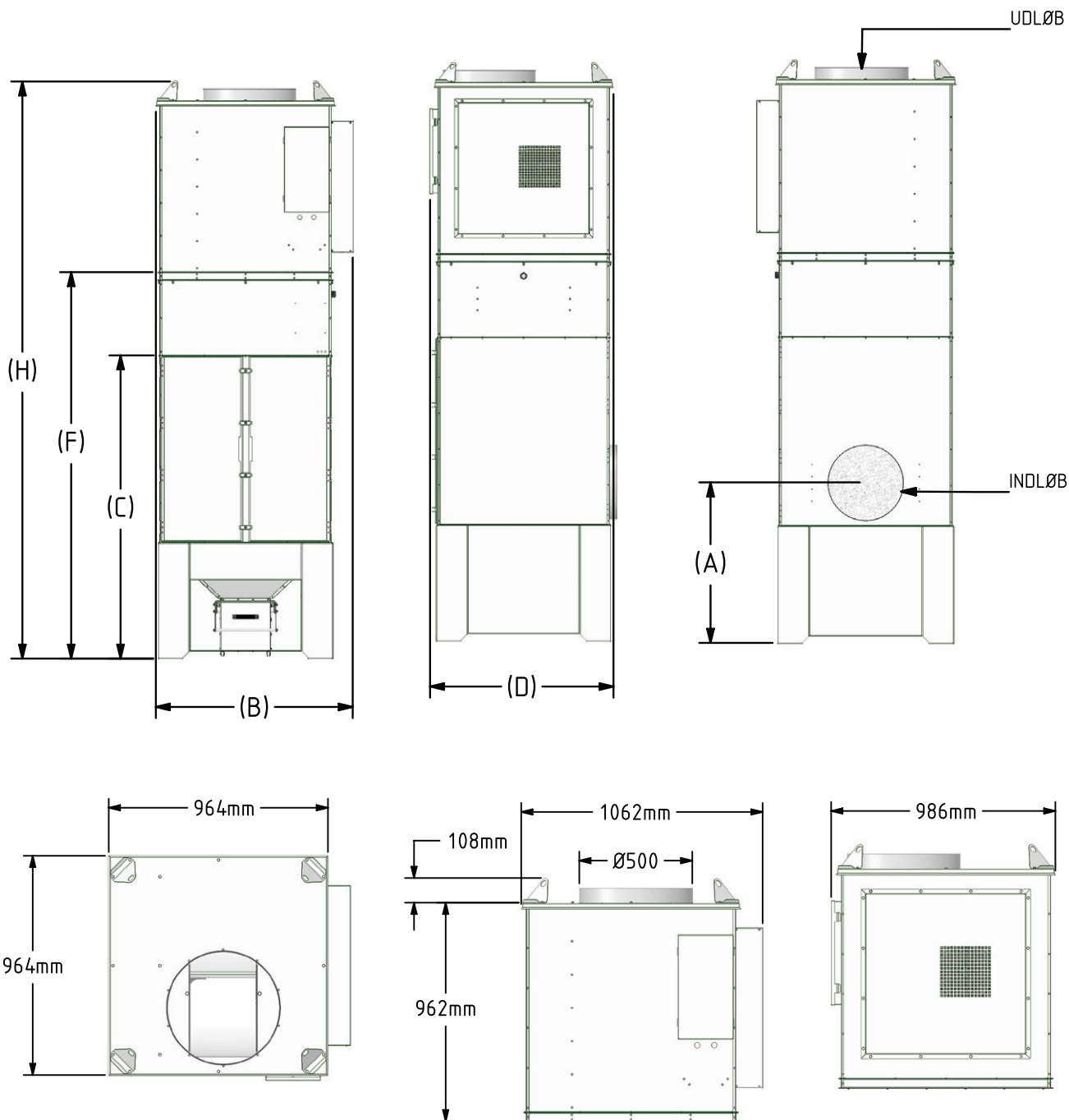
GFB2 Tower with reinforced construction and standard bucket.



GEOVENT

GeoFilter GFB2 Tower

Dimensions



Model/Dimensions [mm]	A	B	C	D	F	H	Inlet	Outlet	Weight
GFB2 Tower 6-2	810	985	1630	910	2080	3040	ø315np	ø400np	290 kg
GFB2 Tower 9-3	855	1060	1630	985	2080	3100	ø400np	ø500np	360 kg
GFB2 Tower 12-4	900	1230	1630	985	2080	3150	ø500np	ø500np	480 kg

Filter media

Filter cartridges come in a wide variety of pleated fabrics, custom fitted to the specific process. Below our range of available standard filter media.



Art no.	Description
15-480FL	FT/11 - 99,9% v/0,3µm (grinding dust / no smoke or oil mist)
15-480AFL	FT/11 - 99,9% v/0,3µm ALUTEC (All-Round)
15-481FL	FT/13 - 99,9% v/0,3µm (welding smoke)
15-482FL	FT/18 - 99,9% v/0,3µm (laser/plasma) PTFE membrane (for GFB2 HD)
	Extra for alu-coating - pr. filterpatron
15-479	Pre-coat - ensures longer life for cartridge. Per kg. (approx. 50 grams per filterpatron)



Advanced control of the filter unit for maximum performance.



Application	Art. No.	15-480FL	15-482FL	15-480AFL	15-481FL
Oil mist					X
Dry welding smoke					X
Oil saturated welding smoke					P*
Foundry					X
Powder coating		X		X	
Plasma/laser cutting			P*		
Sand blasting / Sand		X			
Sand blasting / Glass				F*	
Sand blasting / enamel, steel, aluminium					
Grinding					X
Unspecified dust with out smoke		X			
Milk powder					X
Spice				A*	
Tobacco				X	
Paper				X	
Chalk					X
Cement					X
Saw dust				A*	

*Notes: P = Prekote F = Moisture resistant A = ATEX approved

Model	GFB2 Tower 6-2	GFB2 Tower 9-3	GFB2 Tower 12-4
Number of filter cartridges	6	9	12
Filter type	Standard	Standard	Standard
Filter area [m ²]	60	90	120
Number of shot valves	2	3	4
Max Airflow [m ³ /h] (Dependant on volume)	3600	5400	7200
Air tank [liter]	8	12	16
Filter control w. display, Protection class	IP65	IP65	IP65
Inlet/outlet, sealing class	Classe C	Classe C	Classe C
Collection bucket [liter]	25	25	25
Galvanized cabinet, Corrosion class	III	III	III
Order number	15-471	15-472	15-473
Fan	MEF 400-3, 4,0 kw / 5,5 kw	MEF 450-3, 5,5 kw / 7,5 kw	MEF 500-3, 7,5 kw
Temperature extracted air	Max. 80°	Max. 80°	Max. 80°

See datasheet for fan and pressure drop curves on next page

Compressed air	Air usage	Power supply	Temperature	Typical pressure drop	Sound level
3 - 6 bar clean and dry air	Typical 3.0L (compressed air) per valve per shot	24VDC or 230 VAC	-12° - +65° C	1000-1500 Pa	<68 dB(A)

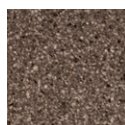
Accessories



Art. No.	Description
92-214	Timer control GFB2 is mounted from the factory as standard
92-214B	Differential pressure control GFB2



15-490	Water separator for GFB2 filter with regulator, manometer and mounting bracket
--------	--



15-431A	Sound insulation of GFB2 6-2 Tower
15-432A	Sound insulation of GFB2 9-3 Tower
15-433A	Sound insulation of GFB2 12-4 Tower

Only for the fan cabinet



15-435	Thermal insulation GFB2 6-2
15-436	Thermal insulation GFB2 9-3
15-437	Thermal insulation GFB2 12-4

Only for the filter cabinet

Pressure drop for fan

