

Extraction Arms

COMPACT arm $\varnothing 160$ and $\varnothing 200$ mm

Geovent COMPACT arm is the perfect extraction solution, when the room height is low at the working place, e.g. in welding boxes. The COMPACT arm gives with its telescope function the perfect balance between larger arm's suction capacity and smaller arm's smooth operation. When the work is done – you push the arm up and away, and therefore it requires a minimum of space. The arm is mainly used for welding of smaller subjects, where time and space is scarce.

The arm is supplied ready for mounting in the ceiling (360° turn able) or at the wall (wall bracket necessary), with a separate fan or connected to a central extraction system.

The arm can be extended up to 7 m by means of an extension arm.

Description

Ceiling bracket: 360° turn able - Steel console in powder coating with brass bearing and VA rubber sealing ring.

Hood: Light weight hood in $\varnothing 160$ or $\varnothing 200$ mm. The hood is equipped with an integrated ergonomic handle. Covered in powder coating yellow RAL1007.

Arm: Aluminum profiles with tension springs and sliding bearing.

Hose: Black Weld in strong PVC/ polyester web with steel spiral. Temperature from -40°C to $+100^{\circ}\text{C}$.

For further information on installation requirements etc., please refer to our instruction manual.

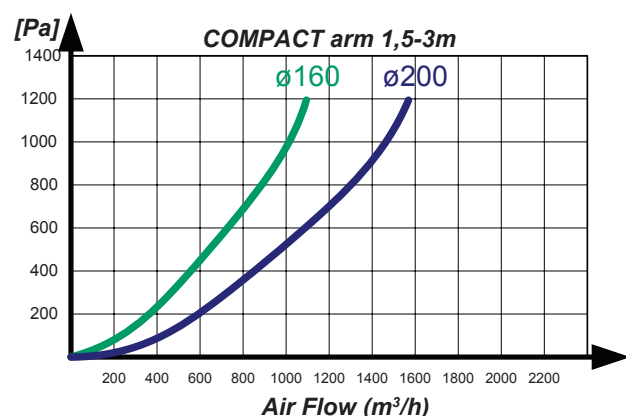
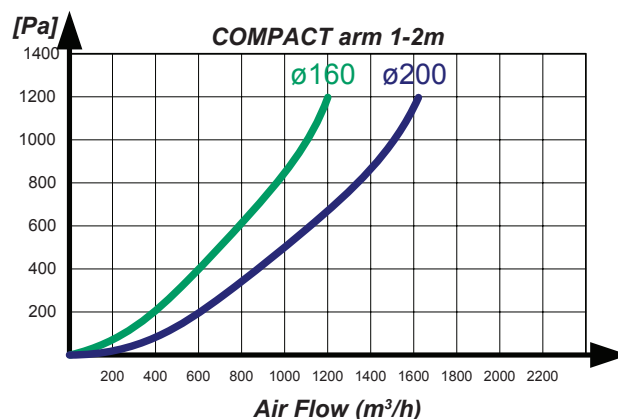


COMPACT arm 1-2m installed and including automatic control devices for automatic start/stop of the fan and motor damper.

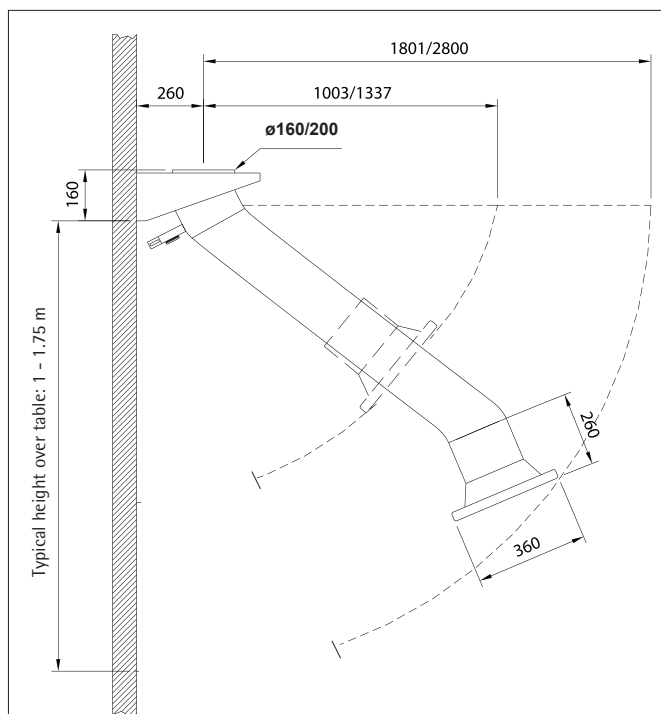


COMPACT arm

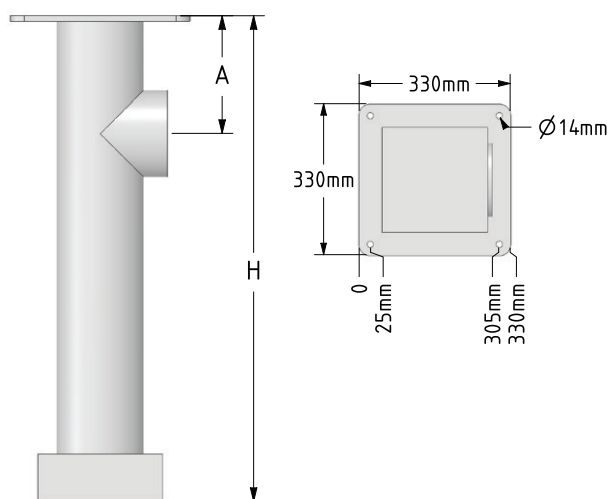
Pressure drop



Dimensions



Ceiling console



White COMPACT arm, customized design.

Ordering table

Art. No	Description
01-700	COMPACT arm 1 - 2 m telescopically $\varnothing 160$ mm
01-706	COMPACT arm 1,5 - 3 m telescopically $\varnothing 160$ mm
01-701	COMPACT arm 1 - 2 m telescopically $\varnothing 200$ mm
01-707	COMPACT arm 1,5 - 3 m telescopically $\varnothing 200$ mm

Accessories for the COMPACT arm

Art. No	Description
12-008	Air tight damper $\varnothing 160$ mm
12-009	Air tight damper $\varnothing 200$ mm
01-540	Wall bracket $\varnothing 160$ mm
01-541	Wall bracket $\varnothing 200$ mm
01-550	Extension 1m $\varnothing 160$ mm
01-550A	Extension 1m $\varnothing 200$ mm
01-130	Extension 2,5m $\varnothing 160$ mm
01-130A	Extension 2,5 m $\varnothing 200$ mm
01-131	Extension 4,0m $\varnothing 160$ mm 2 joints
01-132	Extension 4,0m $\varnothing 200$ mm 2 joints
01-138	Extension 4,0m $\varnothing 160$ mm 1 joints
01-139	Extension 4,0m $\varnothing 200$ mm 1 joints
01-160	Ceiling consol $\varnothing 160$ mm, lengths 0,4 - 1,2 m.
01-161	Ceiling consol $\varnothing 160$ mm, lengths 1,2 - 2,4 m.
01-162	Ceiling consol $\varnothing 200$ mm, lengths 0,4 - 1,2 m.
01-163	Ceiling consol $\varnothing 200$ mm, lengths 1,2 - 2,4 m.

